

DUAL DELIVERY IN ALICE PRATT BROWN HALL CLASSROOMS

Connect these three cables to your computer: HDMI (with adapter), USB, and Ethernet



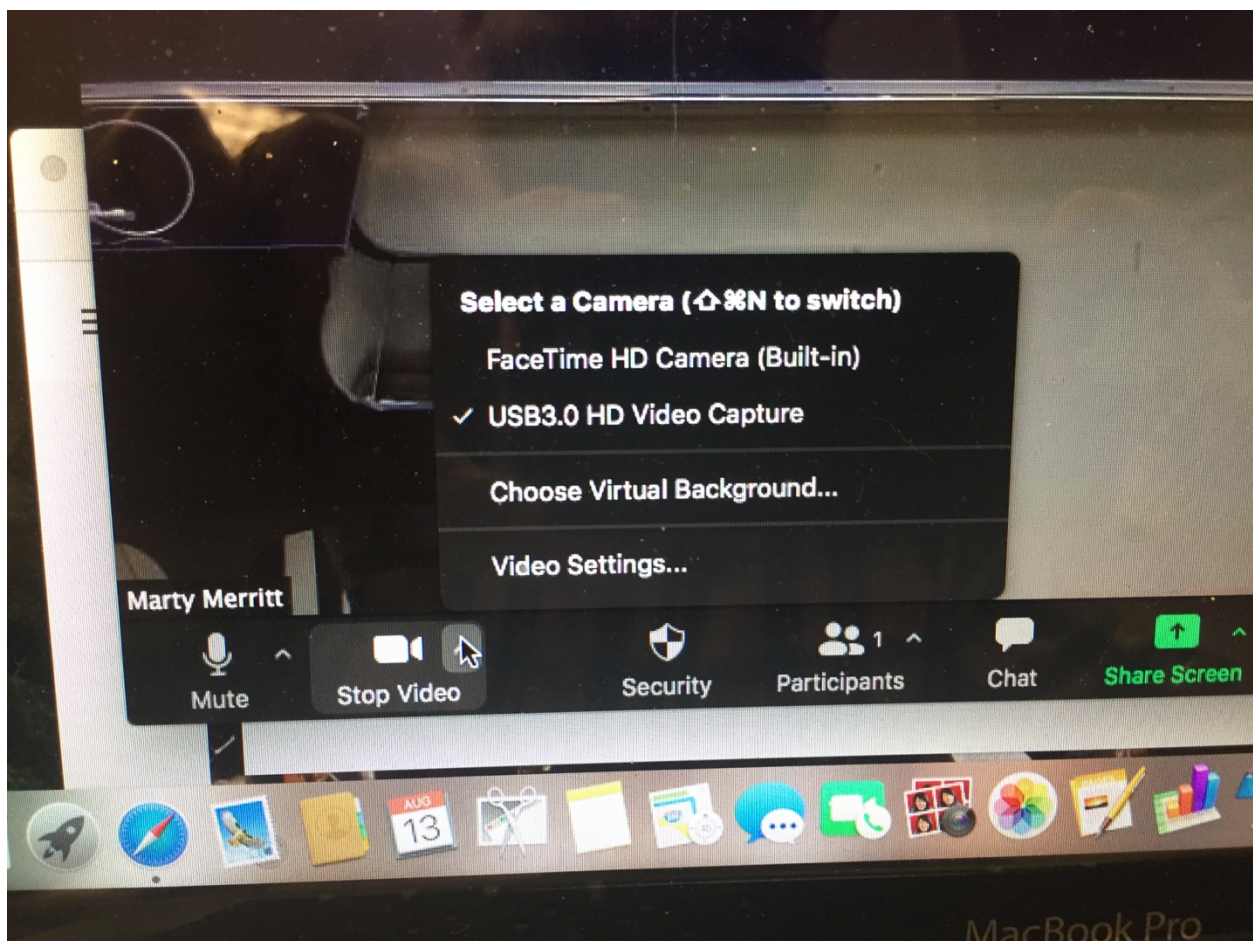
Turn on the projector with its remote and be sure the amplifier is on. Turn on the camera with its remote.



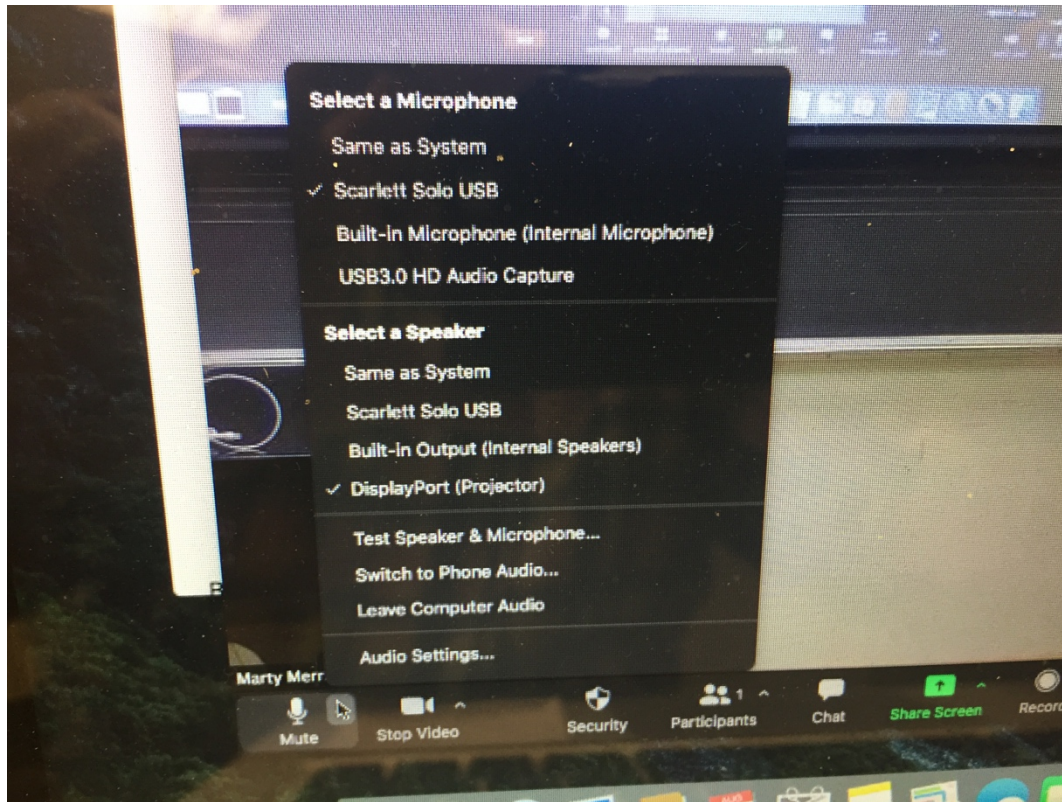
Be sure the amplifier is set to “V. AUX” and the volume level is around -10.0 dB or below.



Start Zoom. Select “USB 3.0 HD Video Capture” on the Video arrow on the bottom left of the Zoom window.

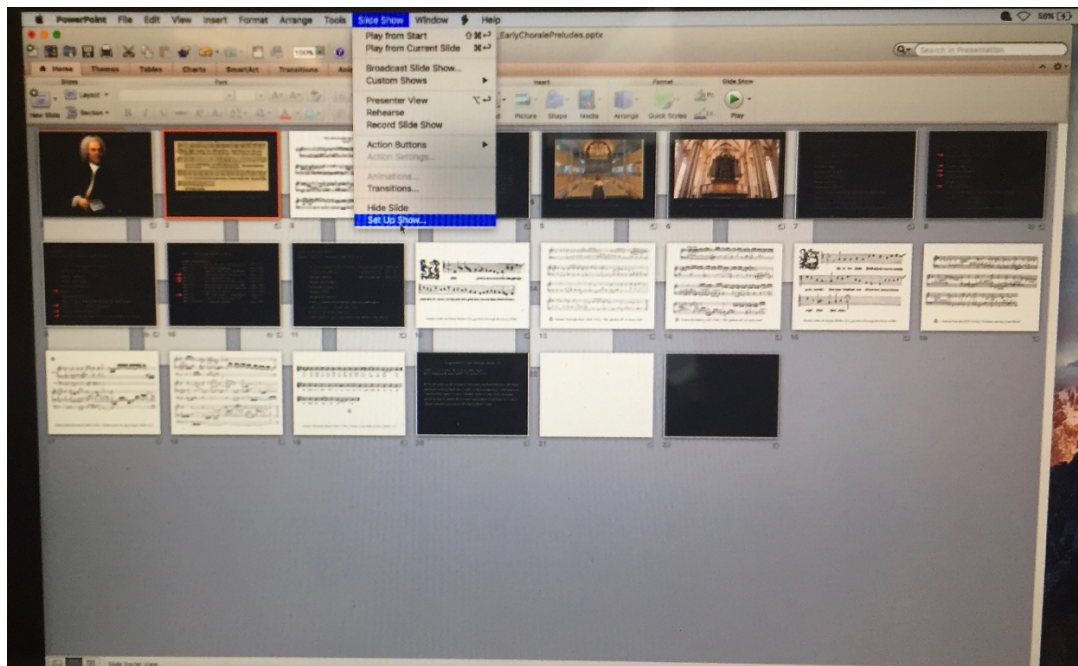


Select “Scarlett Solo USB” and “DisplayPort (Projector)” on the Audio/Mute arrow on the bottom left corner of the screen.

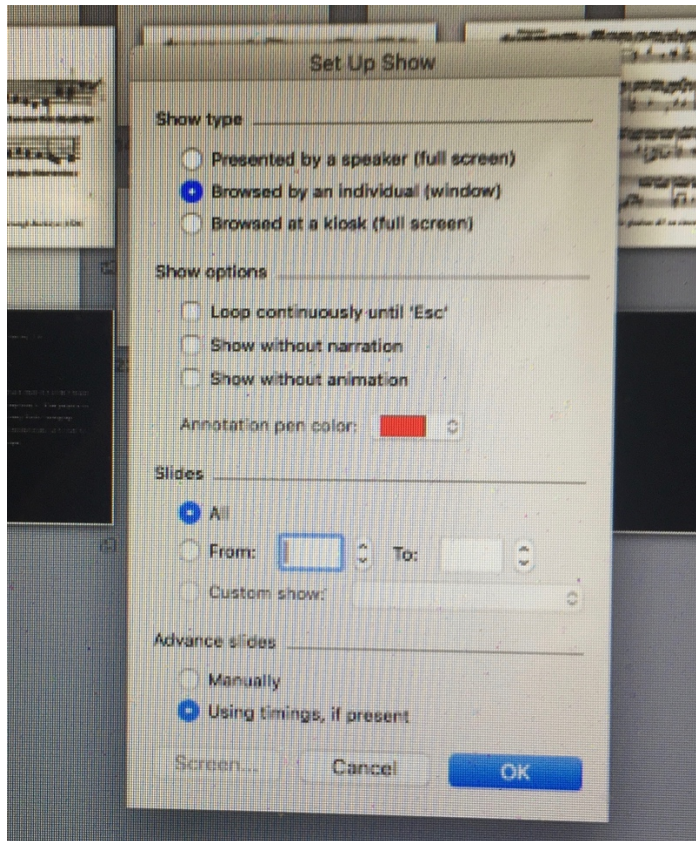


Share screen if desired. It is recommended to share the desktop so your participant camera thumbnails will be seen on the screen. If you are sharing audio, such as from YouTube, be sure to check “Share computer sound.”

If you are using PowerPoint, slide show mode will hide your participant camera thumbnails. To avoid this, select “Set Up Show...” from the Slide Show window.



Next, select “Browsed by an individual (window)” and increase the size of your window to fill as much of the screen as you can. This, again, will prevent a full-screen slide show from hiding your camera thumbnails.



If you are using the HD room camera, you can use the remote to pan and zoom to focus on you or the board, or both.

If you are using an iPad, you can use it to log on as another attendee and make that attendee a co-host. This will allow you to share the iPad screen if you have different material, such as a document with handwritten comments.